

The Western Australian Centre for Road Safety Research



Projects overview



OUR VISION



To see road-related harm to the WA community eliminated.

This is the 'zero' of the Towards Zero Strategy.

OUR TEAM



Teresa Senserrick
Director



Paul Roberts
Deputy Director



Muhammad Hussain
Research Fellow



Lynne Meuleners
Senior Honorary Fellow



Razi Hasan
Research Associate



Damir Kekez
Research Officer



Matt Albrecht
Senior Research Fellow



Angela Yan
Research Associate

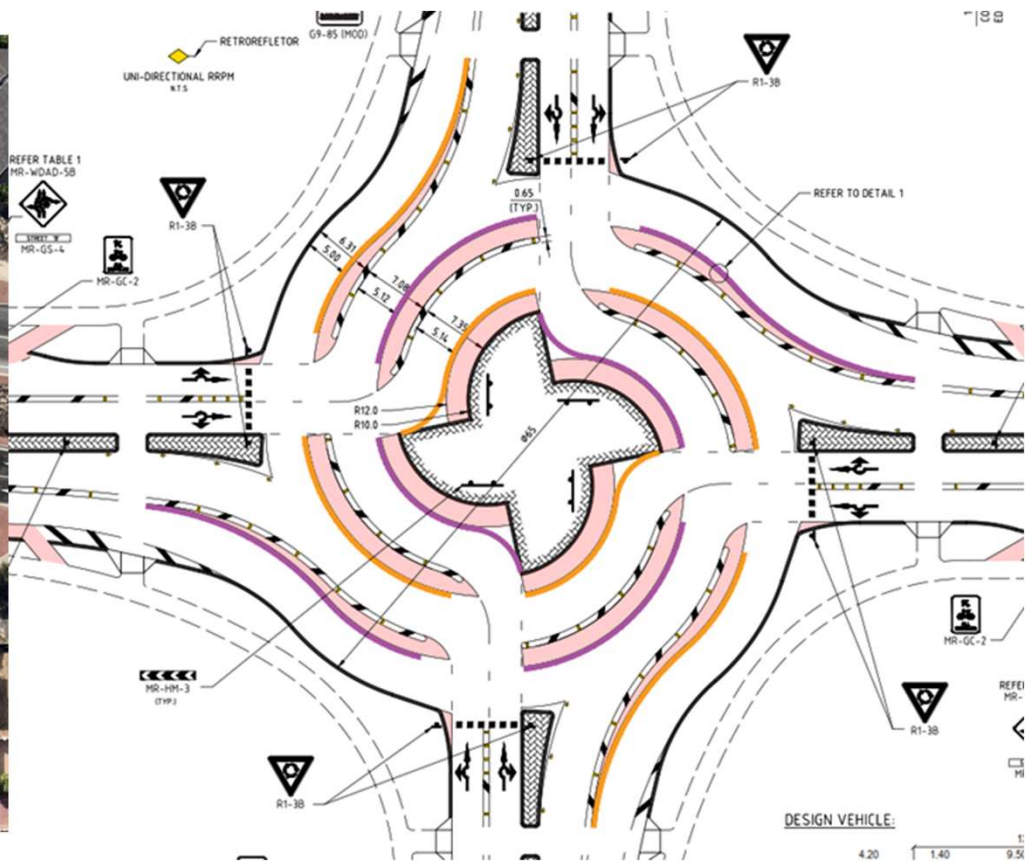


Judy Fleiter
Project Manager

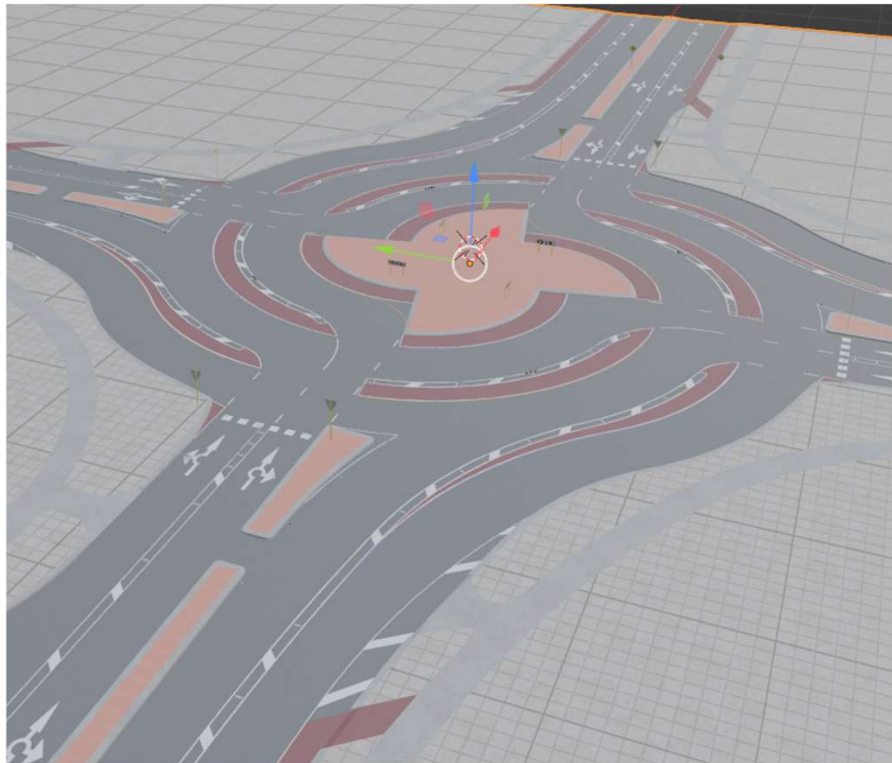
OUR SIMULATOR



TURBO ROUNDABOUT



TURBO ROUNDABOUT



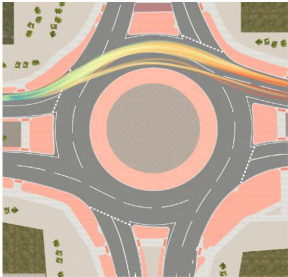
TURBO ROUNDABOUT



Control - Reverse Curve



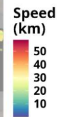
Control - Straight



Turbo - Reverse Curve - Colour



Turbo - Reverse Curve - Colourless



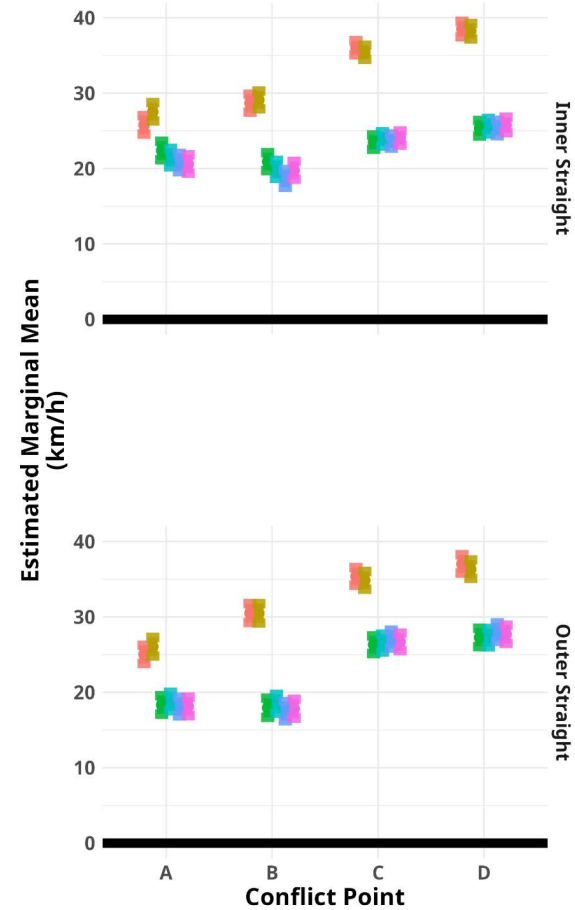
Turbo - Straight - Colour



Turbo - Straight - Colourless



Speed at Conflict Point



Intersection

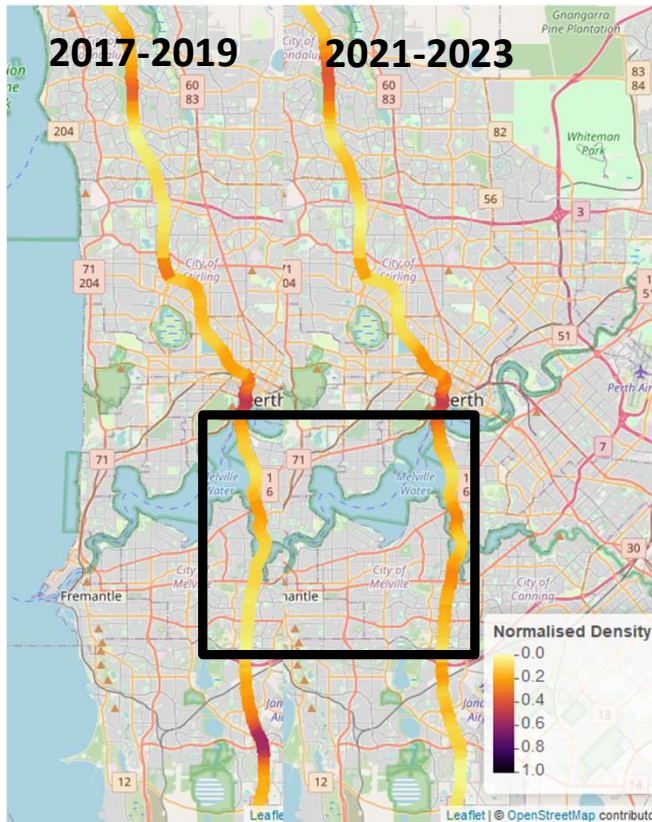
- Control - Reverse Curve
- Control - Straight
- Turbo - Reverse Curve - Colour
- Turbo - Reverse Curve - Colourless
- Turbo - Straight - Colour
- Turbo - Straight - Colourless



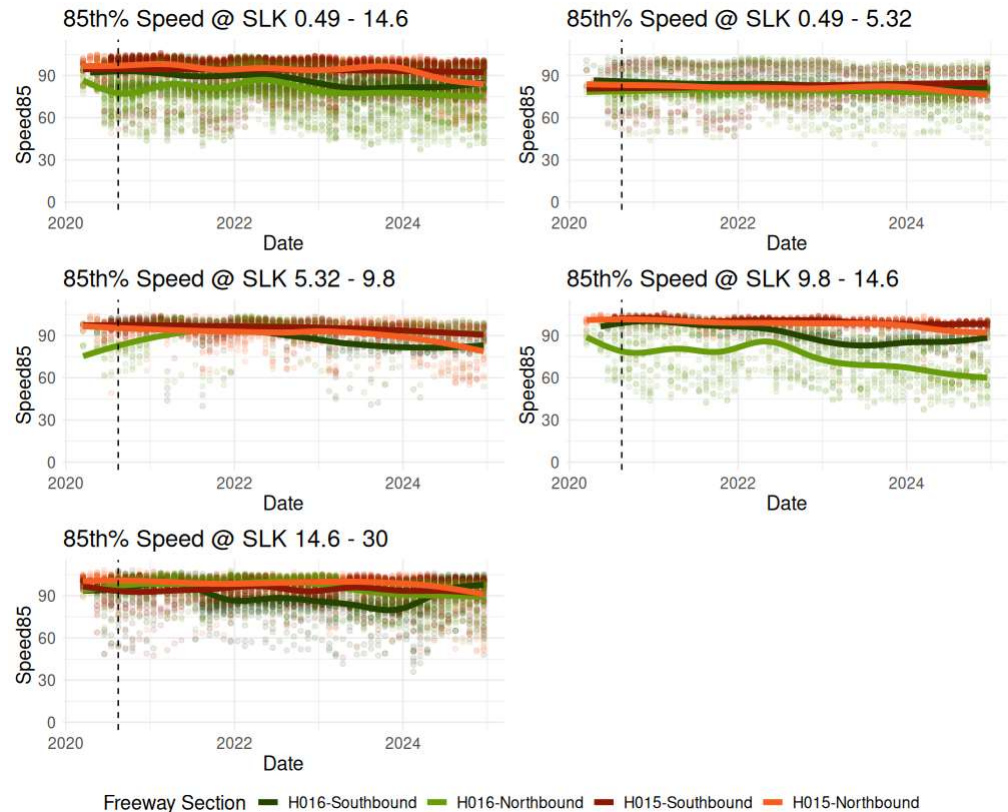
DYNAMIC ICONOGRAPHY



SMART FREEWAY



Crash Density

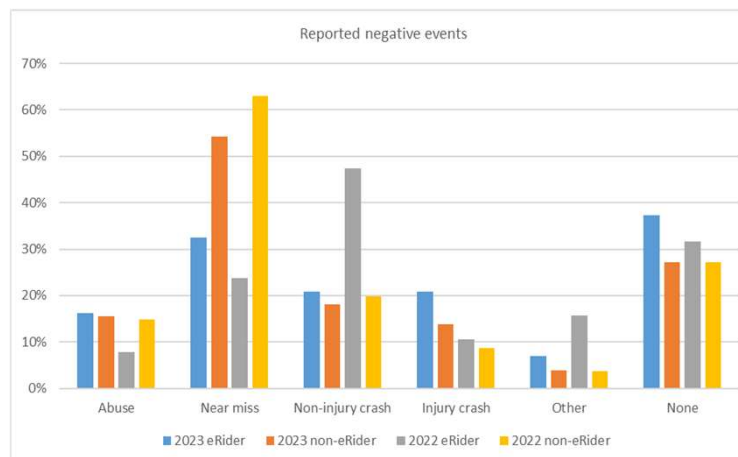


**Connected Vehicle Speed Data
(Compass IoT)**

eRIDEABLE STUDY



- **2022 Study**
- Acquire baseline data about eRideables and eRider user characteristics and behaviour in WA
- Estimate the degree of compliance with WA regulations
- Estimate the incidence of risky behaviours
- Compare eRiders to cyclists
- **2023 study**
- Assess changes in behaviour over time
 - Has compliance improved?
 - Has behaviour changed?
 - CoP hire scheme impact (March 2023)



- The proportion of eRiders judged to be less than 16 years old was similar to 2022 and generally around 3%
- The proportion of eRiders observed carrying a passenger was less than 1% - down from 3.3% in 2022
- As in 2022, in each eRideable category helmet compliance was lower than for bicycles
- Helmet compliance for eScooters (but not bicycles) deteriorated by around 5% (to 80%) compared to 2022
- More than 40% of hire device riders were unhelmeted, (up from 32% in 2022)
- Private device riders non-helmet rates remained static (~10% - same as cyclists)

OTHER CAPABILITIES



Drug impairment
Fatigue
Training
Brief interventions and mindfulness
Stress
Developmental disorders
Decision making
Computational behaviour
EEG
Eye tracking
Driver assist
Automated technologies
Bike simulator





The Western Australian Centre for Road Safety Research

THANK YOU



WESTERN AUSTRALIAN
CENTRE FOR ROAD
SAFETY RESEARCH